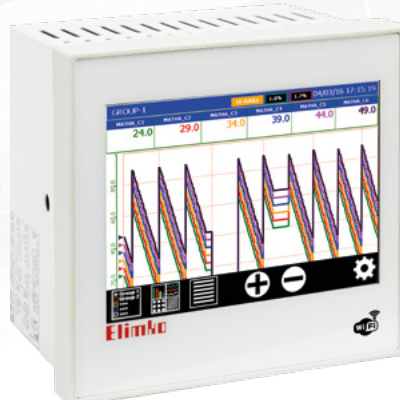


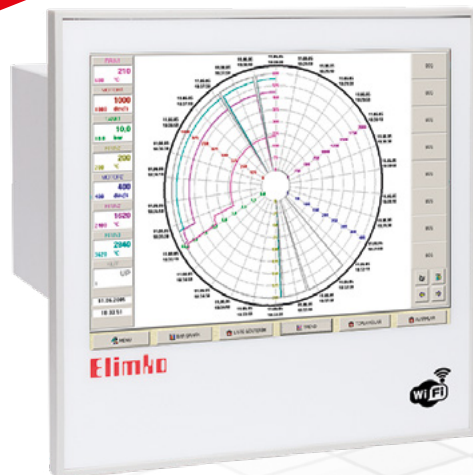
Elimko



E-PR-110



E-PR-110



E-PR-200



E-PR-200

Paperless Data Recording
and Control Technology
E-PR-110 & E-PR-200

Description of the Devices

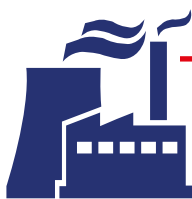


E-PR-110 Description

E-PR-110 series paperless recording and control devices are paperless recording and control devices designed by using new generation micro controllers. They are used in every field of the industry with user-programmable universal inputs and outputs, 144x144 mm panel dimensions, 5.7” touch-sensitive LCD screen, 8 GB memory, 3, 6, 9, 12, 15, 18, 21, 24-channel universal inputs, 12 relay outputs, 64 digital inputs/outputs, 16 analog outputs, easily removed and installed I/O cards that do not require re-programming.

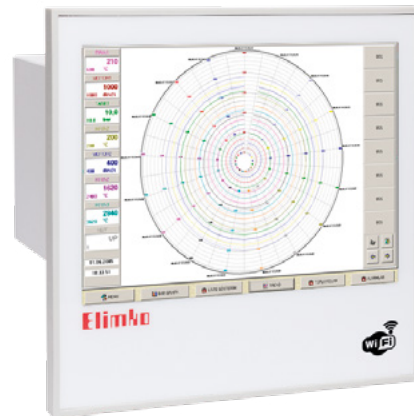
With the PID feature offered as standard, it provides high output sensitivity and stable control in automatic control systems.

It is a multi-function paperless recording and control device with a wide range of communication options, web server offered as standard, RS485, Ethernet connection, USB port and WiFi option.



Industries

- Iron Steel
- Glass
- Cement
- Power Plants
- Food
- Paper
- Aviation and Defense
- Medicine
- Petro-Chemical
- Paint
- Tire
- Ceramic
- Metallurgy

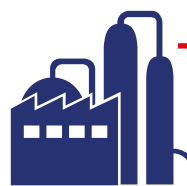


E-PR-200 Description

E-PR-200 series new generation paperless recording and control devices are preferred in every field of the industry with their innovative design and programmable input and output modules. With 288x288 mm panel dimensions, 12.1” touch-sensitive LCD screen, 8 GB memory, up to 54 channels of universal inputs, 18 relay outputs, 144 digital inputs/outputs and 16 analog output possibilities, they are used for recording and monitoring physical units such as temperature, pressure, level, flow rate, current, voltage in digital environment.

With the PID feature offered as standard, it provides high output sensitivity and stable control in automatic control systems.

It is a multi-function paperless recording and control device with a wide range of communication options, web server offered as standard, RS485, Ethernet connection, USB port and WiFi option.

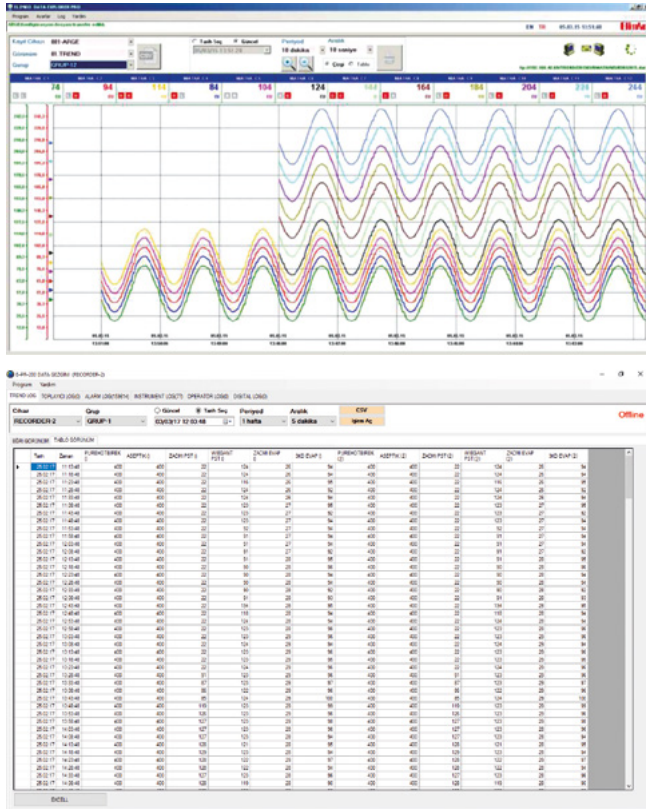


Fields of Use

- Drying ovens
- Environmental parameters
- Fermentation processes
- Flow measurements
- Autoclave applications
- Sintering processes
- Sterilization applications
- Heat treatment processes
- Power recording systems
- Energy efficiency applications
- Process data monitoring

PC Software Program

Elimko Data Explorer Pro (EDEP) software is the Windows application developed for monitoring the recording devices produced by Elimko over a computer. The software is provided by Elimko free of charge.

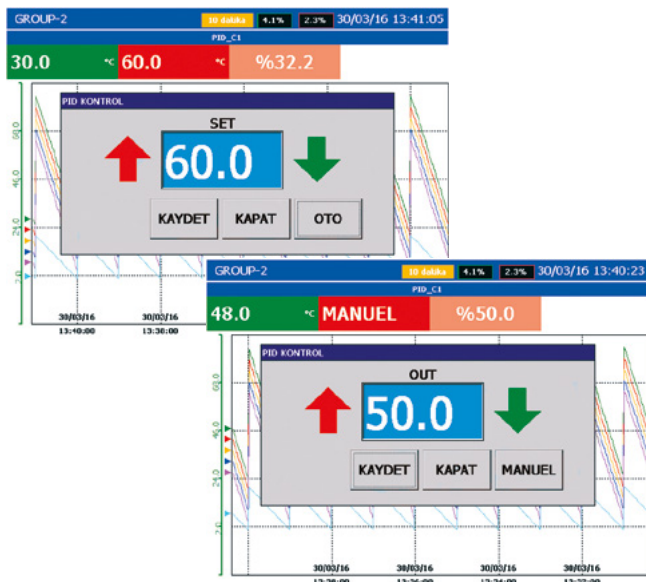


Data Explorer Pro

With Data Explorer Pro program USB, Ethernet or Wi-Fi connection can be established and data can be transferred from devices to PC environment. Data can be monitored in graphic, digital image or table form. Graphic print-outs can be obtained by the operator by entering the date intervals. If table format is selected, data can be analyzed and archived by converting to CVS format.

Importance of the Program

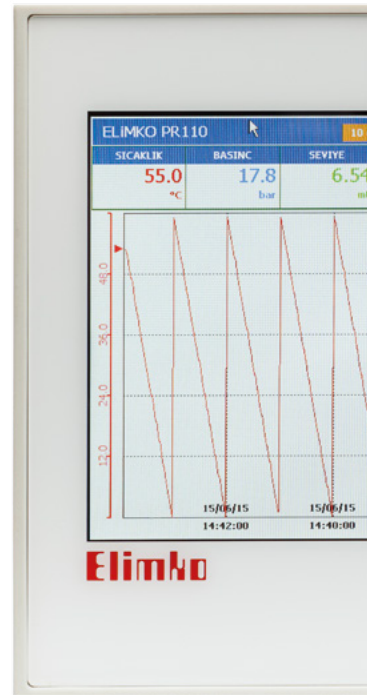
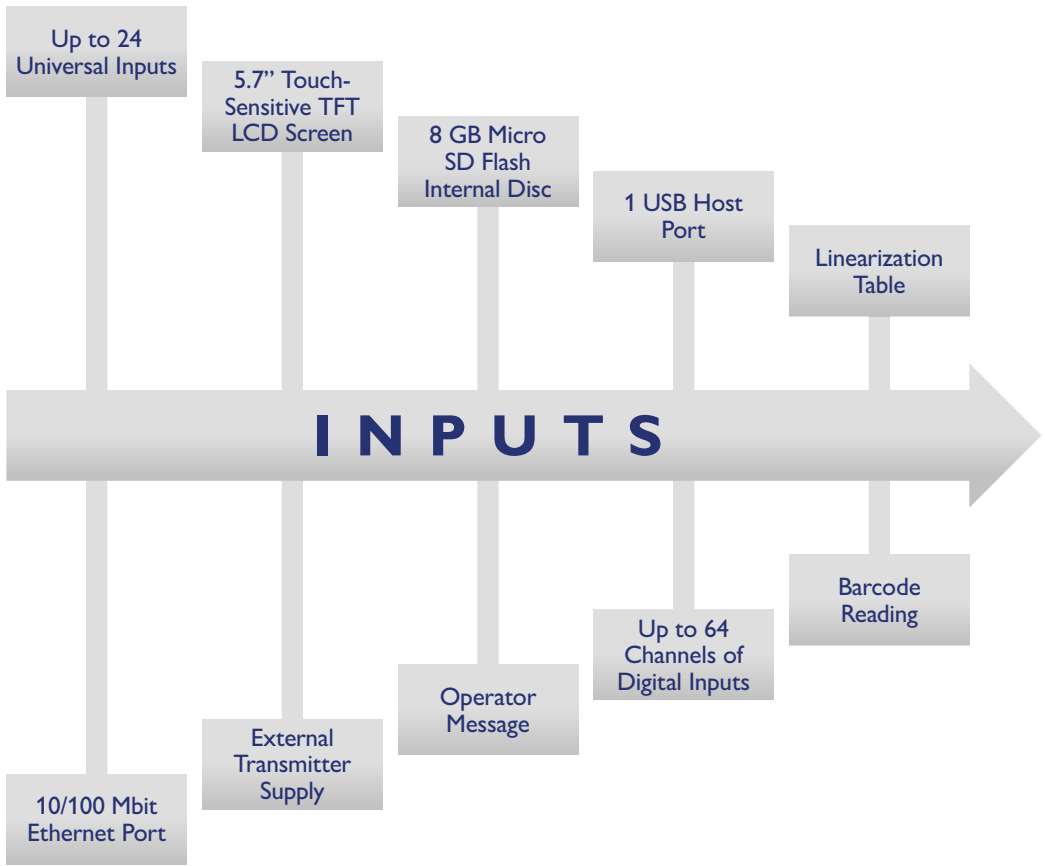
With Elimko Data Explorer Pro program it is aimed to transfer the records correctly, compare them and archive them.



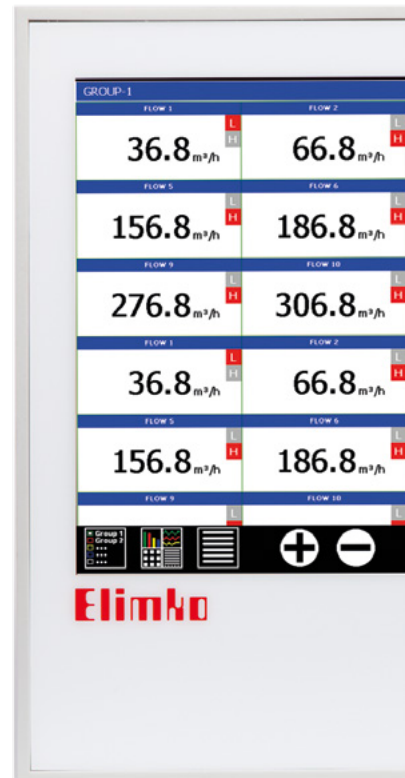
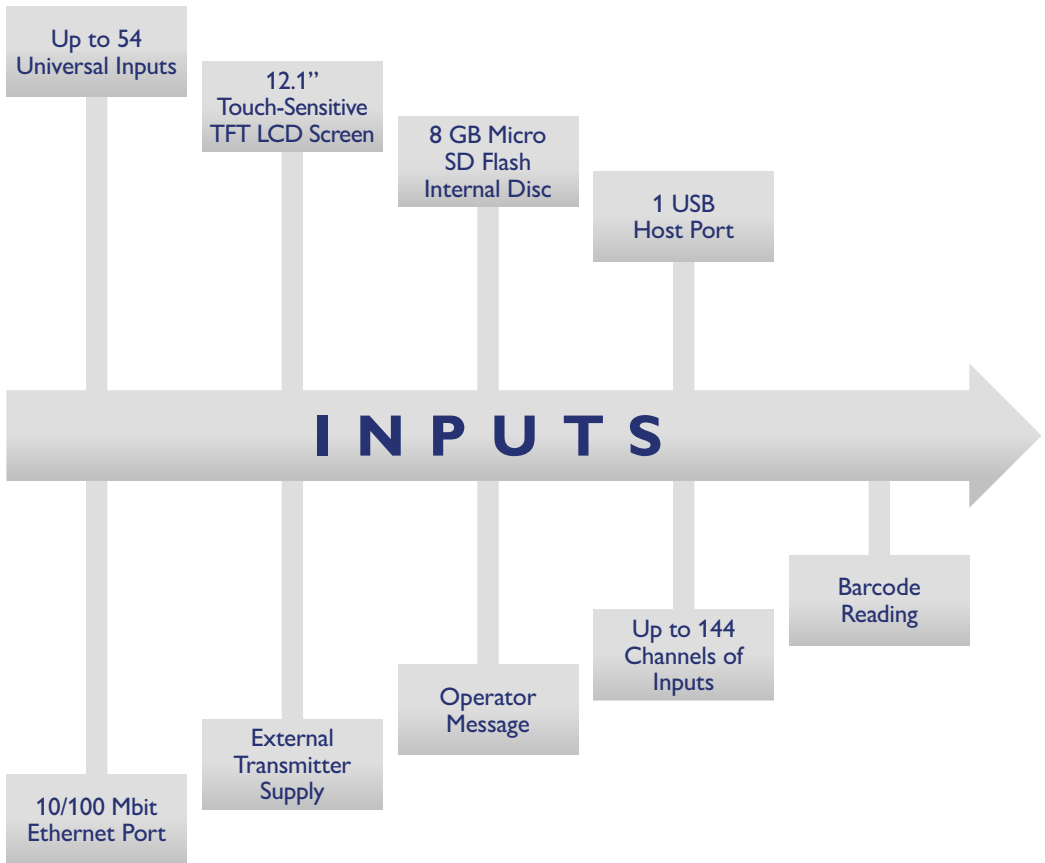
PID Control Feature

In addition to being recording devices with their modular architecture and rich input output card options, E-PR-110 and E-PR-200 models are also have the identity of a controller.

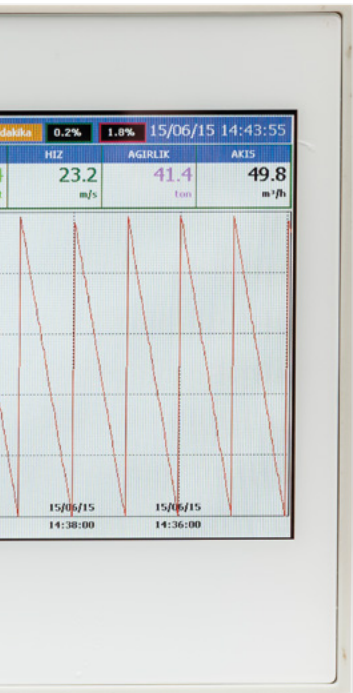
With the PID feature offered as standard in Elimko PR-110 and PR-200 models, 12 virtual or analog channels can be controlled as PID.



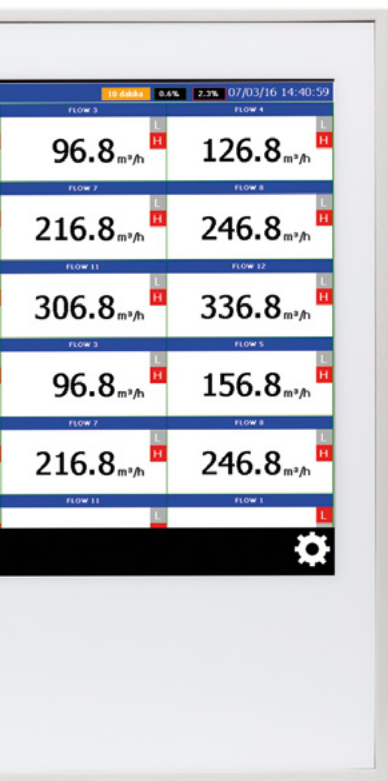
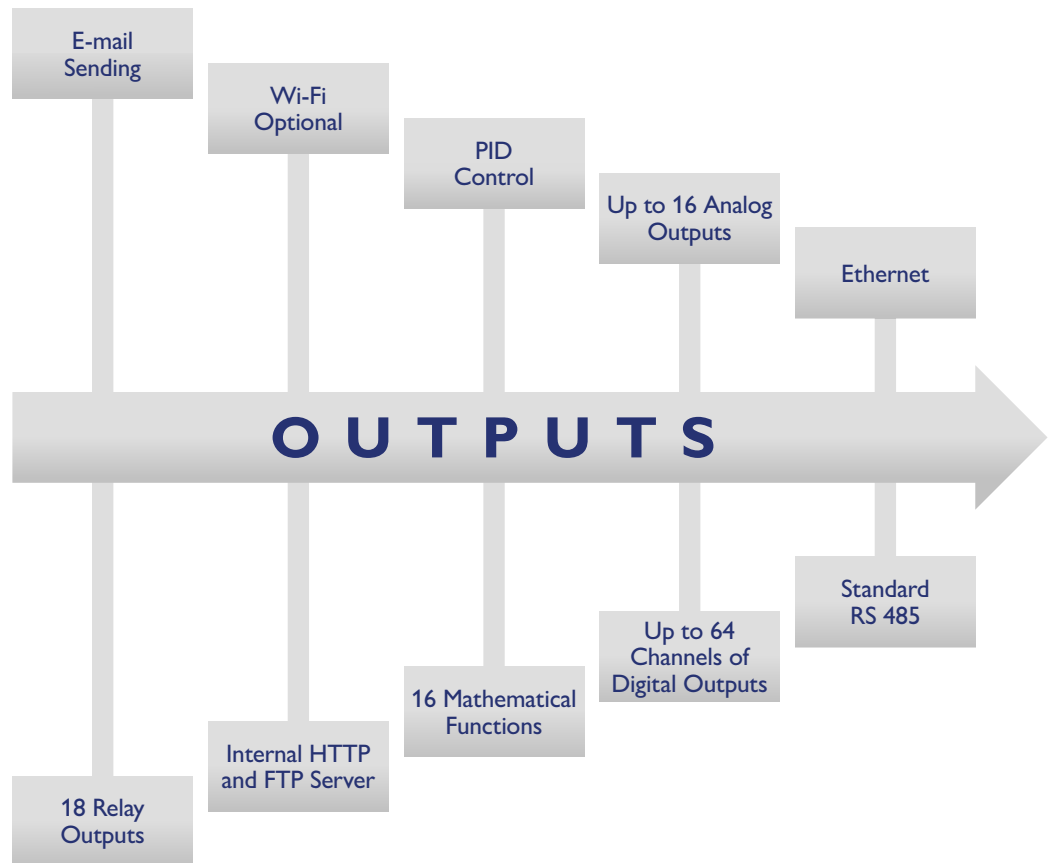
E-PR



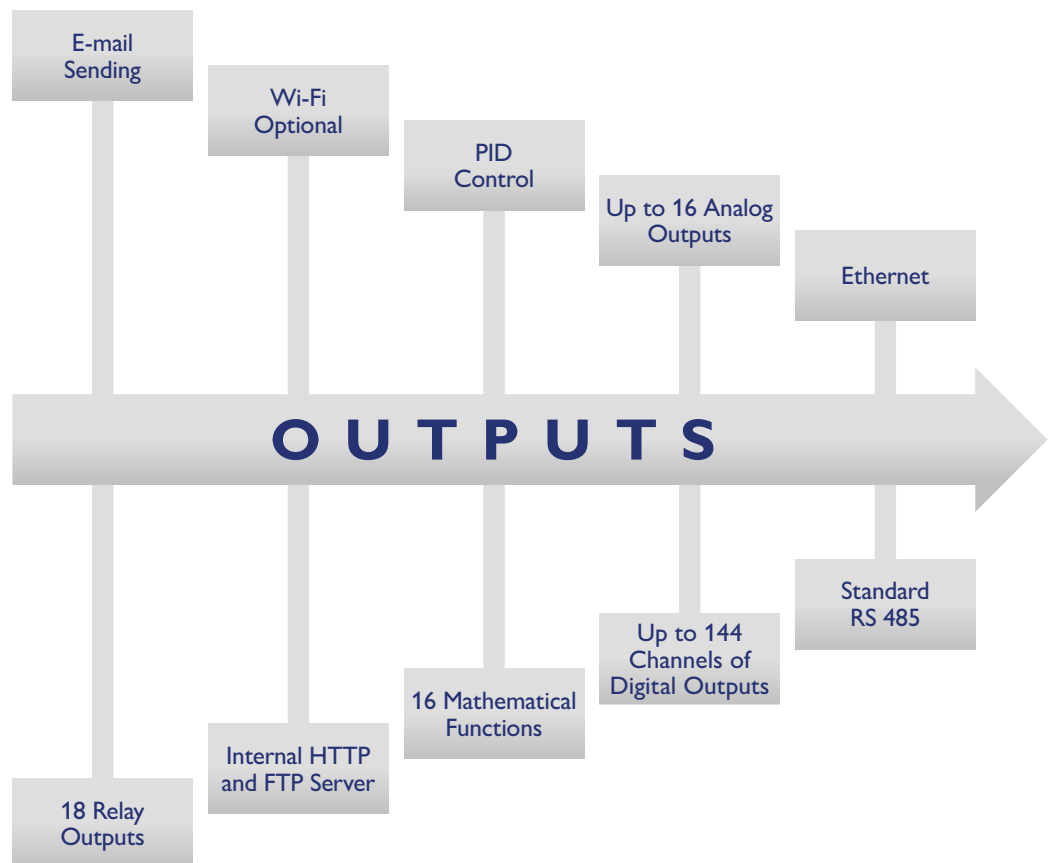
E-PR



-110



-200



Different Viewing Types

All data can be displayed over the recording devices with different viewing options. Digital viewing, trend viewing, bar, graphic, circular recording and panorama viewing options can be selected by the operator. 6 processes of 6 channels each can be defined in the device. The channels in process groups can be selected from analog, modbus, math analog and digital channels in the slots.



Operation-Based Recording Feature

Recordings may be made continuously or operation based. Start action can be selected from the operator menu or action can be started with the barcode reader. The related action party number, serial number, operator names and similar details may be defined. Search can be made in the past using the operation name.

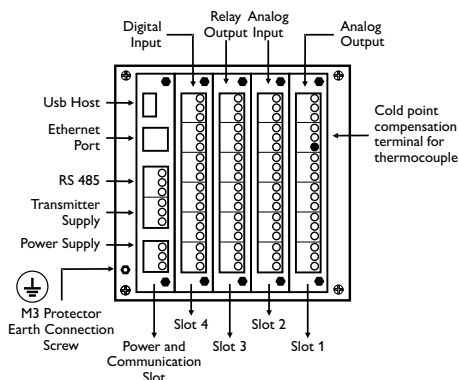
E-mail Sending and Web Server

Both devices are equipped with the feature of directly sending e-mails. This feature allows providing information with e-mail to maintenance and operation personnel periodically or when certain events occur. Device report with instantaneous data can be sent with e-mail over the SMTP server up to 4 users. All data in the device can be monitored with the integrated web server.



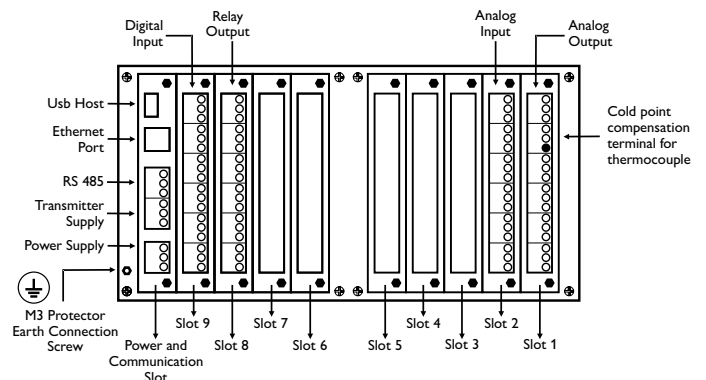
E-PR-110 (Modular Design)

The E-PR-110 and E-PR-200 series devices designed with universal analog input, analog output, digital input and output cards find widespread use with their flexible structures. Users are provided with considerable

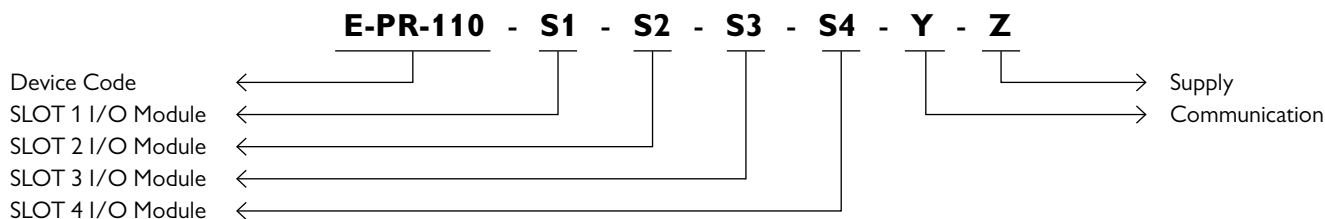


E-PR-200 (Modular Design)

benefit with their wide range of cards. Since all cards are designed as “plug-and-play”, modules may be ordered later and installed to the devices by the users.



E-PR-110 Purchase Order Code Generation



Select from the cards below for SLOT 1, SLOT 2, SLOT 3, SLOT 4.

NONE	0	16 Digital Input	4
3 Analog Input	1	16 Digital Output	5
6 Analog Input	2	4 Analog Output	6
6 Relay Output	3		

NOTE SLOTS are numbered from 1 to 4. One of the I/O modules detailed above is selected in each SLOT.

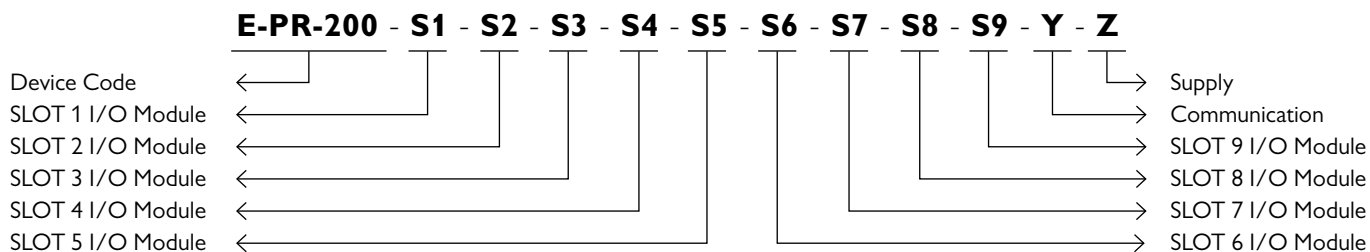
IMPORTANT NOTE:

- * The above I/O alternatives are applicable for all SLOTS.
- ** Within the limits of the supply limit, the total number of relay outputs, analog outputs and two-wire transmitter supply options is limited to 16. This applies when power limit conditions become active at the same time.
- *** There is no such limitation when all SLOTS are selected as ANALOG and DIGITAL inputs.
- **** Please contact Elimko for configuration and different application details.

EXAMPLE

E-PR-110-2-2-3-6-0-0	Standard Feature, 12 Analog Inputs, 6 Relay Outputs, 4 Analog Outputs, 85-265 VAC / 85-375 VDC Supply
E-PR-110-1-1-3-3-0-0	Standard Feature, 6 Analog Inputs, 12 Relay Outputs, 85-265 VAC / 85-375 VDC Supply
E-PR-110-2-2-4-4-0-0	Standard Feature, 12 Analog Inputs, 32 Digital Inputs, 85-265 VAC / 85-375 VDC Supply

E-PR-200 Purchase Order Code Generation



Select from the cards below for SLOT 1, SLOT 2, SLOT 3, SLOT 4, SLOT 5, SLOT 6, SLOT 7, SLOT 8, SLOT 9.

NONE	0	16 Digital Input	4
3 Analog Input	1	16 Digital Output	5
6 Analog Input	2	4 Analog Output	6
6 Relay Output	3		

NOTE SLOTS are numbered from 1 to 9. One of the I/O modules detailed above is selected in each SLOT.

IMPORTANT NOTE:

- * The above I/O alternatives are applicable for all SLOTS.
- ** Within the limits of the supply limit, the total number of relay outputs, analog outputs and two-wire transmitter supply options is limited to 16. This applies when power limit conditions become active at the same time.
- *** There is no such limitation when all SLOTS are selected as ANALOG and DIGITAL inputs.
- **** Please contact Elimko for configuration and different application details.

EXAMPLE

E-PR-200-2-2-2-2-2-2-2-2-1-0	Standard Feature, 54 Analog Inputs, 85-265 VAC / 85-375 VDC Supply
E-PR-200-2-2-2-3-3-3-5-5-0-0-0	Standard Feature, 18 Analog Inputs, 18 Relay Outputs, 32 Digital Outputs, 85-265 VAC/85-375 VDC Supply
E-PR-200-2-2-3-3-6-0-0-0-0-0-0	Standard Feature, 12 Analog Inputs, 12 Relay Outputs, 4 Analog Outputs, 85-265 VAC/85-375 VDC Supply

Elimko

Reliable name in
automatic control
systems and turn-key
contracts...

 /elimkoldsti

 /elimkoldsti

 /elimkoldsti



Elimko Electronic Production and Control Co. Ltd.

Ankara Sanayi Odası 2. Organize Sanayi Bölgesi Alcı Mahallesi 2001. Cad. No:14 Temelli 06909 ANKARA / TURKEY

Phone: (+90) 312 212 6450 (Pbx) • Fax: (+90) 312 212 4143

e-mail: elimko@elimko.com.tr • www.elimko.com.tr