

Manufacturer / Technical Support: Elimko Co. Ltd.
8. Cad. 21. Sk. (Eski 68. Sk.) No:16 Emek 06510 ANKARA / TURKEY
Phone:+ 90 312 212 64 50 • Fax:+ 90 312 212 41 43
www.elimko.com.tr • e-mail:elimko@elimko.com.tr

Elimko _____ E-50

E-50 controller is designed for panel mounting and should be used in an industrial environment.

- The package of E-50 controller contains;
Controller and mounting bracket
User manual
Guarantee certificate
- After opening the package, please check the contents with the above list. If the delivered product is wrong type, any item is missing or there are visible defects, contact the vendor from which you purchased the product.
- Before installing and operating the controller, please read the user manual thoroughly.

E-50 _____ Elimko

- The installation and configuration of the controller must only be performed by a person qualified in instrumentation.
- Keep the unit away from flammable gases, that could cause explosions.
- Do not use alcohol or other solvents to clean the controller. Use a clean cloth soaked in water tightly squeezed to gently wipe the outer surface of the controller.
- The product life of this instrument is 10 years.

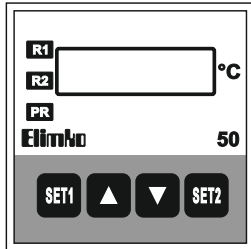


TS EN ISO 9001
Kalite Yönetim Sistemi Belgesi

KY-50-0517-0

Elimko _____ E-50

1. DESCRIPTION



- Economical
- Simple Operation
- Input Types: Thermocouple (J,K,L,S)
Resistance Thermometre (Pt-100)
4 - 20 mA
- On-Off and PID Control
- 4 Digit Display
- 48x48 mm (IEC/TR 60668)
- IP 66 Front Panel
- Security Code for parameters

1

E-50 _____ Elimko

1. DESCRIPTION

E-50 is a low cost, simple to use controller that can be used as an On-Off or PID controller.

Standard input types to the controller are Thermocouple (Type J,K, L, S), Pt-100 Resistance Thermometer and 4-20 mA.

The controller has two set points tahat can be easily adjusted from the front panel buttons.

Accessing the other control parameters is protected by a security code.

2

Elimko _____ E-50

2. TYPE CODING

E - 50 - W - X - 0 - Z

W	Output	X	Input Types	Z	Operating Voltage
0	None	1	J Type TC (0-400°C)	0	220 V AC
1	1 Relay	2	L Type TC (0-400°C)	1	24 V AC
2	2 Relay	3	K Type TC (0-1200°C)		
3	1 Pulse for SSR	4	S Type TC (0-1600°C)		
4	1 Pulse for SSR, 1 Relay	5	Pt-100 (0- 200°C)		
		6	4-20 mA		
		7	Custom		

3

E-50 _____ Elimko

3. TECHNICAL SPECIFICATIONS

Input Types	Thermocouple (TC); Resistance Thermometer (RT); 4 - 20mA
Control Output	Relay : SPDT-NA-O-NK 250 V AC, 5 A Pulse : 24 V DC, 25 mA (for SSR, not isolated)
Alarm Outputs	Relay : SPST-NA 250 V AC, 5 A
Display Type	4 digit 7 mm 7 segment led display
Accuracy	TC and RT : (±0.5% of the reading value or ±2 °C) ±1 digit max. mA : ±0.5% FS ±1 digit max.
Analog Digital Converter	16 bit

4

3. TECHNICAL SPECIFICATIONS

Control Type	On - Off, PID
Operating Voltage	220 V AC ± %10; 50-60 Hz 24 V AC ± %10; 50-60 Hz
Power Consumption	1.5 W (2.5 VA)
Protection Class	Front Panel : IP 66 (NEMA 4X) Rear Case : IP 20
Operating Temperature	0 °C, +55 °C (with no condensation or icing)
Storage Temperature	-25 °C, +65 °C (with no condensation or icing)
Relay Mechanical Life	10 000 000 operations

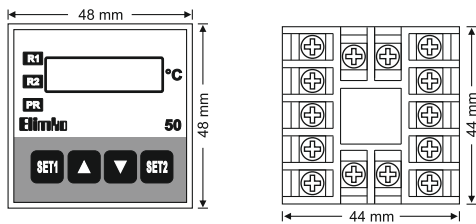
3. TECHNICAL SPECIFICATIONS

Relay Electrical Life	>1 000 000 operations (under 1/10 of load)
Memory	EEPROM (100.000 max. write-erase)
Weight	215 g

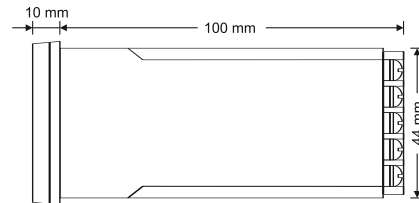


- This controller complies with the European Low Voltage Directive 2006/95/EC, by the application of safety standard TS EN 61010-1. (Pollution degree 2)
- This controller complies with the EMC Directive 2004/108/EC by the application of EMC standard TS EN 61326.

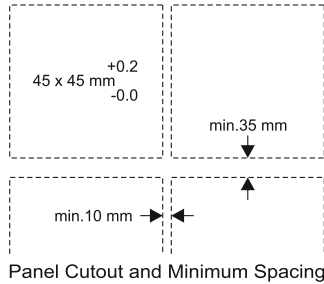
4. DIMENSIONS



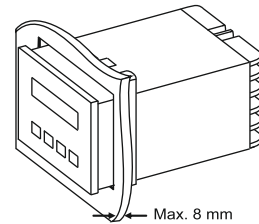
4. DIMENSIONS



5. PANEL MOUNTING



5. PANEL MOUNTING



- Cut a hole in the panel. (See the figure for overall dimensions.)
- Remove the mounting bracket and slide the controller into the cutout from the front of the panel.
- Fit the mounting bracket and slide it until the controller is fastened.

5. PANEL MOUNTING

- E-50 controller should be installed inside a suitable grounded metal enclosure (panel). This must prevent the live parts being accessible to human hands and metal tools.
- E-50 controller does not include a power switch. Therefore, the power supply to the controller and power outputs must be wired through the proper fuse or circuit breaker.
- To minimize the pick-up of electrical noise, the wiring of low voltage lines, particularly the sensor input should be routed away from the high-current power cables. Where it is not possible, use shielded cables with the shield grounded at both ends.
- The cables used for powering the controller and the power outputs must conform to the standards IEC 60245 and IEC 60227.



6. CONNECTION DIAGRAM

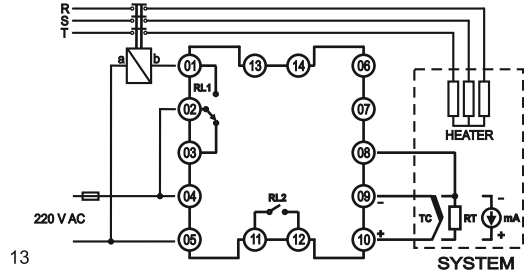
The labels on the sides of the controller identify the ordering code (Type), serial number and wiring connections. The controller options are also indicated on the connection diagram.

- The terminals 01 to 05 and 11-12 are electrically live. While the instrument is powered, nevertouch to these terminals.
- Before operating the controller, ensure that the controller is correctly configured. Incorrect configuration could result in damage to the process being controlled.



6. CONNECTION DIAGRAM

A typical connection diagram is given below.



6. CONNECTION DIAGRAM

- For thermocouple inputs, be sure to use the proper compensation cables and pay attention to the polarity of the connection.
- For 2-wire resistance thermometer, short the terminals 08 and 09 and connect the leads of resistance thermometer to the terminals 09 and 10. For 3-wire resistance thermometer, connection cables must be the same type and length.

7. OPERATION

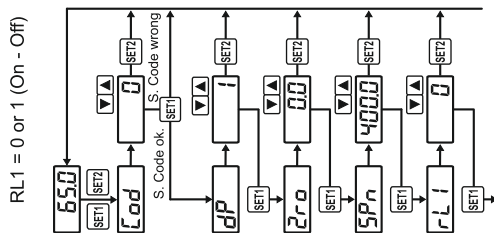
The front panel view of the E-50 controller is given in 1. DESCRIPTION section. The leds R1 and R2 indicates the output states of the controller that drive the relays RL1 and RL2 respectively. PR led lights while in configuration mode. In normal operation, the four digit display displays the process value. The set points are adjusted by ∇ and \blacktriangle while the corresponding SET button (SET1 or SET2) is pressed. The other parameters are configured in configuration mode.

- In order to access the configuration mode, SET1 and SET2 buttons must be pressed simultaneously.
- Just after this operation, Cod message is displayed for one second duration, D is displayed in the display. The security code must be entered ∇ and \blacktriangle buttons in order to access the parameters.

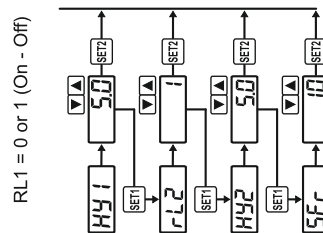
7. OPERATION

- The entered security code must be correct, otherwise pressing SET1 button will revert to normal operation.
- The factory setting value of security code is "10". The security code is defined by SFr parameter; user can edit this parameter to define a new security code. If the value of security code is forgotten, pressing SET1 and SET2 buttons simultaneously at least 10 seconds, makes possible to access the parameters.
- If the entered security code is correct, pressing SET1 key will select the first parameter.
- While a parameter is selected, the parameter value is adjusted by ∇ and \blacktriangle buttons. Pressing SET1 button will select the next parameter. Pressing SET2 button exist the configuration mode.
- The flow chart of configuration modes depending upon the control form are given in the following figures.

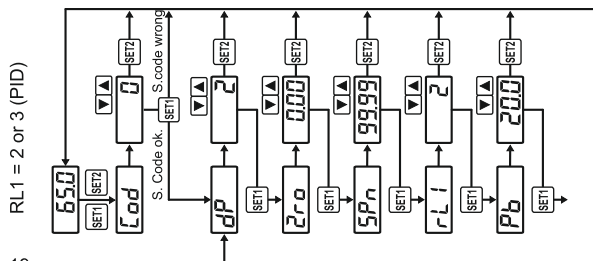
7. OPERATION



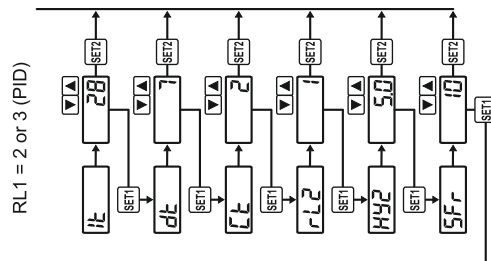
7. OPERATION



7. OPERATION



7. OPERATION



8. EXPLANATION OF PARAMETERS

- Cod** : Security code is asked with this parameter. It can be adjusted between -1999 and 9999.
- dP** : Only displayed if the input type is 4-20 mA. It defines the decimal point location for process value, *zro*, *SPn*, *HY1*, *Pb* and *HY2* parameters. It can be adjusted between 0 and 3.
- zro** : Only displayed if the input type is 4-20 mA. It defines the process value corresponding to 4 mA input. This parameter also defines the lower limits of set points. The parameter can be adjusted between -1999 and *SPn* value.
- SPn** : Only displayed if the input type is 4-20 mA. It defines the process value corresponding to 20 mA input. This parameter also defines the upper limits of set points. The parameter can be adjusted between *zro* value and 9999 value.
- Pb** : Only displayed if *rL1* parameter is selected as 2 or 3. The parameter defines the proportional band for PID control. The parameter can be adjusted between 0 and 9999.

21

8. EXPLANATION OF PARAMETERS

- rL1** : Defines the control form of RL1 output, controlled according to the first set point (SET1). The assignable values and corresponding control forms are given below.
0 : On-Off Control (Reverse) - 1 : On-Off Control (Direct)
2 : PID Control (Reverse) - 3 : PID Control (Direct)
- HY1** : Only displayed if *rL1* parameter is selected 0 or 1. The parameter defines the hysteresis for the RL1 output. It can be adjusted 0 and 9999.
- It** : Only displayed if *rL1* parameter is selected as 2 or 3. The parameter defines the integral action time for PID control. The parameter can be adjusted between 0 and 9999 seconds. Integral action is disabled if the parameter is adjusted as 0.
- dt** : Only displayed if *rL1* parameter is selected as 2 or 3. The parameter defines the derivative action time for PID control. The parameter can be adjusted between 0 and 9999 seconds. Derivative action is disabled if the parameter is adjusted as 0.

22

8. EXPLANATION OF PARAMETERS

- ct** : Only displayed if *rL1* parameter is selected as 2 or 3. The parameter defines the cycle time of PID control. The parameter can be adjusted between 1 and 32 seconds.
- rL2** : Defines the control form of RL2 output, controlled according to the second set point (SET2). The assignable values and corresponding control forms are given below.
0 : Low Alarm, 1 : High Alarm
- HY2** : The parameter defines the hysteresis for the RL2 output. It can be adjusted between 0 and 9999.
- SFr** : Define the security code. Parameter can be adjusted between -1999 and 9999.

23