

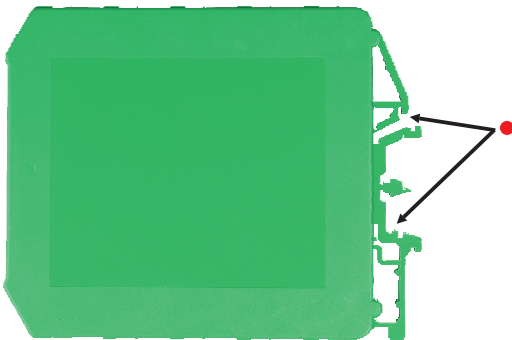
E-770, E-780 and E-790 Series Slim Type Signal Converters
For assembly / disassembly, see the applications shown below.
Please follow the steps.

EXPLANATION

In this application, a DIN mounting rail with dimensions of 35mm width and 7.5mm height has been utilized. The DIN EN 60715 standard, established by the German Institute for Standardization (Deutsches Institut für Normung), defines various dimensions for mounting rails. The most commonly used DIN rails in the market have a width of 35mm and a height of either 7.5mm or 15mm.

ASSEMBLY

Figure 1



- For mounting and securing electronic equipment compatible with DIN rails, there are protrusions resembling clips or hooks on the bottom of the rail.

Figure 2

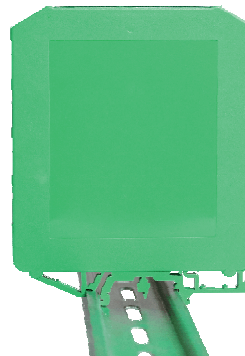
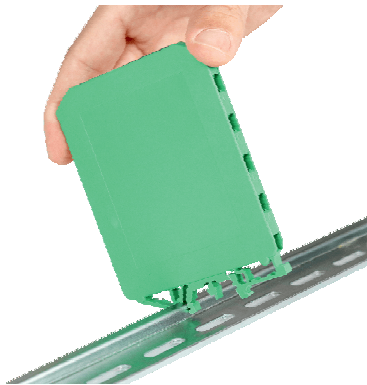


Figure 3



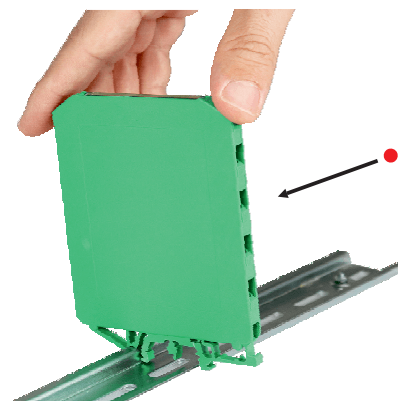
Figures 2 and 3 shows the completed mounting of the electronic device on the DIN rail is depicted in the cross-sectional view, illustrating the junction points between the rail and the device's clip structure.

Figure 4



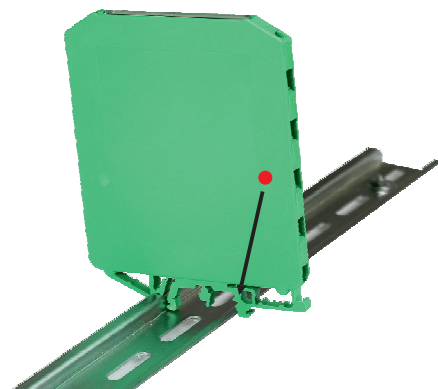
During the mounting process onto the DIN rail, the upper hook structure of the electronic device is seated onto the rail's tab mating point, as shown in the diagram.

Figure 5



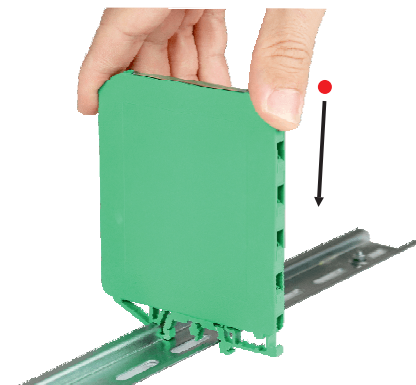
- To complete the mounting of the rail, the upper clip structure is placed on the top of the rail, and the lower clip is brought to the junction point of the rail as shown in the diagram.

Figure 6



- The bottom clip structure of the electronic device and the contact surface of the rail mounting extension are shown.

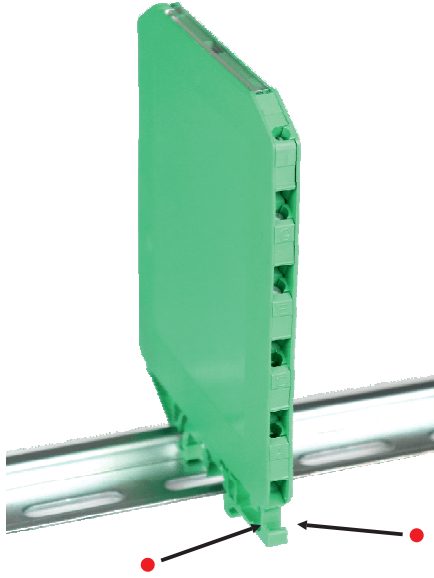
Figure 7



- To complete the mounting of the electronic device, apply slight force to the lower tab as shown in the illustration to secure it onto the rail.

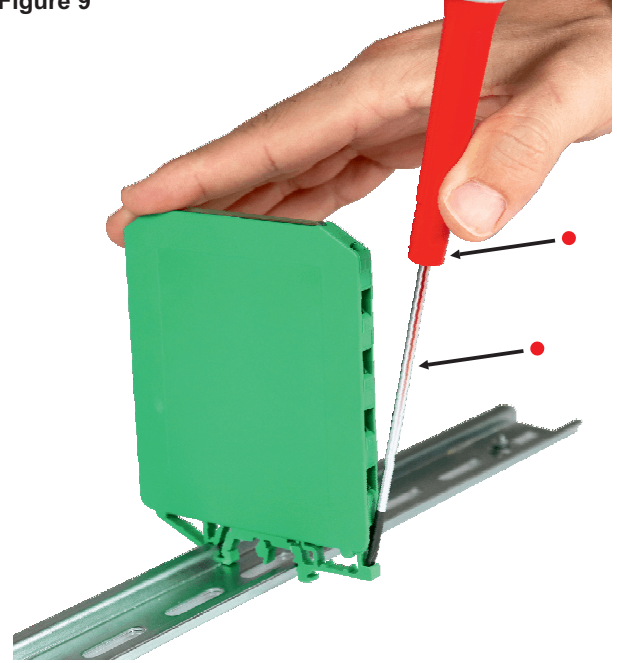
DISASSEMBLY

Figure 8



- The location and structure of the disassembly channel for the electronic device mounted on the mounting rail are illustrated for the disassembly stage.

Figure 9



- To disassemble the electronic device, a flathead screwdriver is inserted into the channel as shown in the image.

Figure 10



- To complete the disassembly of the electronic device, a gentle force is applied as shown in the image, and it is lifted off the rail.